

# FRISKVAND



## FM-600AKE (SB) FLAKE ICE MACHINE / FM-600AKE-N (SB) NUGGET ICE MACHINE

### Product Description

The FM-600AKE (-N) is a modular Ice maker which produces either Flake or Nugget Ice. Flake and Nugget Ice is popular for a variety of cooling purposes including the display of fish and fresh produce as well as in the medical world for cooling blood and organs. This ice is often used to prepare cocktails and drinks because of the quickness of cooling and limited dilution of drinks.



- Hoshizaki ice makers are micro computer controlled, controlling the ice making-process to perform at its best under varying circumstances, without having to make physical adjustments.
- The characteristics of the ice produced by Hoshizaki ice makers means that 'freeze-burn' is no longer an issue when displaying fresh fish or produce.
- Quality stainless steel auger and evaporator increase the life expectancy of these components and the whole ice maker, as well as reducing costly maintenance visits.
- An easily cleanable air filter allows end users to carry out a routine cleaning schedule, extending product life expectancy and reducing the frequency and costs of maintenance call-outs.
- Due to the auger system the water consumption is equal to the ice production.

### Available Models

FM-600AKE (Air cooled)
FM-600AKE-N (Air cooled)

### Ice

Model	Shape
FM-600AKE	Flake
FM-600AKE-N	Nugget



### Bins

Model	Type of Bin	Max. Bin Capacity
B-301SA	Modular	144 kg
B-501SA, Top Kit TK 8 D		217 kg
B-801SA, Top Kit TK 8 D + TK 18 D		348 kg

### Production

Model	Ice Production per 24h	Temperature	Water Consumption per 24h
FM-600AKE	Approx. 600kg Approx. 540kg Approx. 445kg	AT.10°C, WT.10°C AT.21°C, WT.15°C AT.32°C, WT.21°C	Approx. 0,63m³ Approx. 0,57m³ Approx. 0,48m³
FM-600AKE-N	Approx. 530kg Approx. 460kg Approx. 400kg	AT.10°C, WT.10°C AT.21°C, WT.15°C AT.32°C, WT.21°C	Approx. 0,56m³ Approx. 0,49m³ Approx. 0,43m³

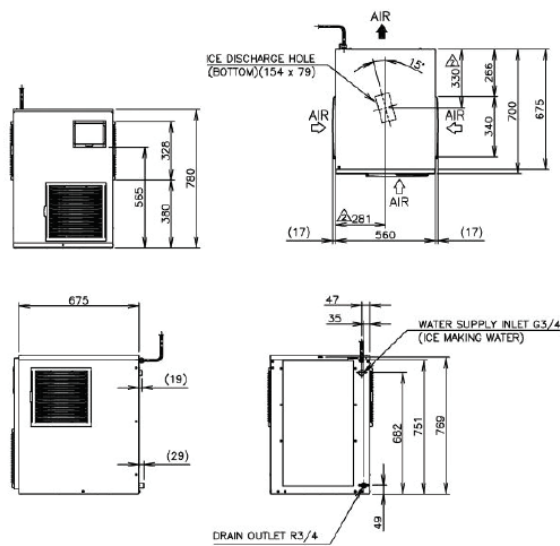
# FRISKVAND



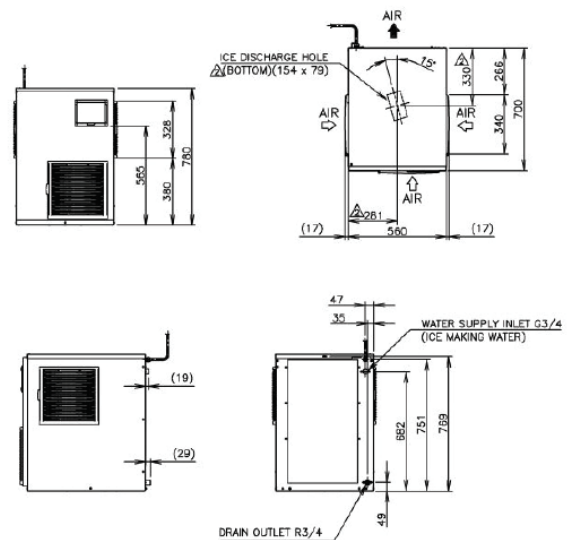
# HOSHIZAKI

## FM-600AKE (SB) FLAKE ICE MACHINE / FM-600AKE-N (SB) NUGGET ICE MACHINE

FM-600AKE



FM-600AKE-N



Specification	FM-600AKE	FM-600AKE-N
<b>Power Supply</b>	1 Phase 220-240V 50Hz Capacity: 4.76kVA (20.7A)	1 Phase 220-240V 50Hz Capacity: 4.76kVA (20.7A)
<b>Amperage</b> (AT:32°C, WT:21°C)	10.5A Starting: 76A	10.8A Starting: 76A
<b>Electric Consumption</b>	1900W (Power Factor: 85%)	1950W (Power Factor: 82%)
<b>Connections - Water Supply</b>	Direct Connection to Water Main, Inlet: G3/4 (Rear)	Direct Connection to Water Main, Inlet: G3/4 (Rear)
<b>Connections - Drain</b>	Outlet: R3/4 x 2 (Rear)	Outlet: R3/4 x 2 (Rear)
<b>Ice Making System</b>	Thin ice forming inside Cylinder (Flake Ice)	Thin ice forming inside Cylinder (Nugget Ice)
<b>Compressor</b>	Hermetic	Hermetic
<b>Condenser</b>	Fin and Tube type, Air-cooled	Fin and Tube type, Air-cooled
<b>Heat Rejection</b> (AT:32°C, WT:21°C)	3950W	3700W
<b>Evaporator</b>	Tube coiled around Cylinder (Solder Plated)	Tube coiled around Cylinder (Solder Plated)
<b>Refrigerant</b>	R404A	R404A
<b>Ice Making Water Control</b>	Float Switch and Water Valve	Float Switch and Water Valve
<b>Electrical Circuit Protection</b>	Circuit Breaker, Earth Wire	Circuit Breaker, Earth Wire
<b>Refrigerant Circuit Protector</b>	Compressor Internal Motor Protector, Internal Pressure Relief Valve (Auto-reset), Pressure Switch (Auto-reset)	Compressor Internal Motor Protector, Internal Pressure Relief Valve (Auto-reset), Pressure Switch (Auto-reset)
<b>Mechanism Protection</b>	Micro switch (Manual-reset)	Micro switch (Manual-reset)
<b>Interlock</b>	Shutdown by Microprocessor (Manual-reset)	Shutdown by Microprocessor (Manual-reset)
<b>Dimensions Product excl. Packaging</b>	560 x 700 x 780 (W x D x H, mm)	560 x 700 x 780 (W x D x H, mm)
<b>Dimensions Product incl. Packaging</b>	665 x 820 x 950 (W x D x H, mm)	665 x 820 x 950 (W x D x H, mm)
<b>Weight Gross / Net</b>	114kg / 107kg	114kg / 107kg

Operation Conditions	
<b>Ambient Temperature</b>	5 - 40°C
<b>Water Supply Temperature</b>	5 - 35°C
<b>Water Supply Pressure</b>	0.05-0.8MPa (0.5-8bar)
<b>Voltage Range</b>	Rated Voltage ±10%

Accessories
Mounting Bracket
Installation Kit