

FRISKVAND



HOSHIZAKI

FM-750AKE FLAKE ICE MAKER / FM-750AKE-N NUGGET ICE MAKER

Product Description

The FM-750AKE (-N) is a modular ice maker which produces either flake or nugget ice. The flake and nugget ice is popular for a variety of cooling purposes including the display of fish and fresh produce as well as in the medical world for cooling blood and organs.



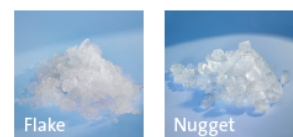
- Hoshizaki ice makers are micro computer controlled, controlling the ice making process to perform at its best under varying circumstances, without having to make physical adjustments.
- The characteristics of the ice produced by Hoshizaki ice makers means that 'freeze-burn' is no longer an issue when displaying fresh fish or produce.
- Quality stainless steel auger and evaporator increase the life expectancy of these components and the whole ice maker, as well as reducing costly maintenance visits.
- An easily cleanable air filter allows end users to carry out a routine cleaning schedule, extending product life expectancy and reducing the frequency and costs of maintenance call-outs.
- Due to the auger system the water consumption is equal to the ice production.

Available Models

FM-750AKE (Air Cooled)
FM-750AKE-N (Air Cooled)

Ice

Model	Shape
FM-750AKE	Flake - Approx. (70% ice hardness, 30% water)
FM-750AKE-N	Nugget - Approx. (88% ice hardness, 12% water)



Bins

Model	Type of Bin	Max. Bin Capacity
B-501SA	Modular	217 kg
B-801SA, Top Kit TK 18 D		348 kg

Production

Model	Ice Production per 24h	Temperature	Water Consumption per 24h
FM-750AKE	Approx. 750 kg Approx. 650 kg Approx. 530 kg	AT.10°C, WT.10°C AT.21°C, WT.15°C AT.32°C, WT.21°C	Approx. 0,77m ³ Approx. 0,68m ³ Approx. 0,56m ³
FM-750AKE-N	Approx. 590 kg Approx. 500 kg Approx. 390 kg	AT.10°C, WT.10°C AT.21°C, WT.15°C AT.32°C, WT.21°C	Approx. 0,60m ³ Approx. 0,51m ³ Approx. 0,40m ³

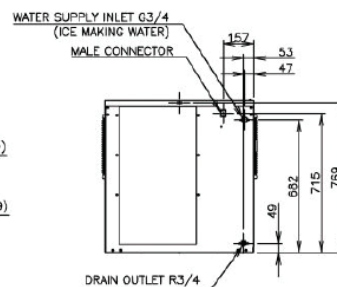
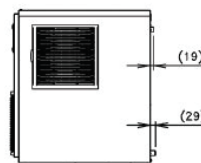
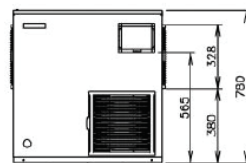
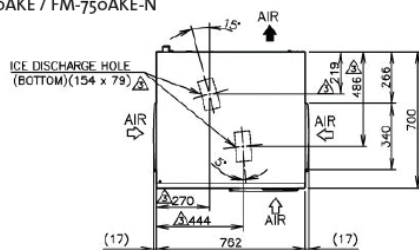
FRISKVAND



HOSHIZAKI

FM-750AKE FLAKE ICE MAKER / FM-750AKE-N NUGGET ICE MAKER

FM-750AKE / FM-750AKE-N



Specification	FM-750AKE	FM-750AKE-N
Power Supply	1 Phase 220-240V 50Hz Capacity: 2.7kVA (11.3A)	1 Phase 220-240V 50Hz Capacity: 2.7kVA (11.3A)
Amperage (AT:32°C, WT:21°C)	9.2A Starting: 43A	9.7A Starting: 43A
Electric Consumption	1880W (Power Factor: 89%)	2010W (Power Factor: 90%)
Exterior	Stainless Steel, Galvanized Steel (Rear)	Stainless Steel, Galvanized Steel (Rear)
Insulation Foam / Blowing Agent	HFC-245fa, 365mfc	HFC-245fa, 365mfc
Connections - Water Supply	Direct Connection to Water Main, Inlet: 3/4" (Rear)	Direct Connection to Water Main, Inlet: 3/4" (Rear)
Connections - Drain	Outlet: 3/4" (Rear)	Outlet: 3/4" (Rear)
Ice Making System	Thin ice forming inside Cylinder (Flake Ice)	Thin ice forming inside Cylinder (Nugget Ice)
Compressor	Hermetic	Hermetic
Condenser	Fin and Tube type, Air-cooled	Fin and Tube type, Air-cooled
Heat Rejection (AT:32°C, WT:21°C)	3650W	3650W
Evaporator	Tube coiled around Cylinder (Solder Plated)	Tube coiled around Cylinder (Solder Plated)
Refrigerant	R404A 1200 g	R404A 1200 g
Ice Making Water Control	Float Switch and Solenoid Valve	Float Switch and Solenoid Valve
Electrical Circuit Protection	Circuit Breaker, Earth Wire	Circuit Breaker, Earth Wire
Refrigerant Circuit Protector	Compressor Internal Thermostat (Auto-reset), Pressure Switch (Auto-reset)	Compressor Internal Thermostat (Auto-reset), Pressure Switch (Auto-reset)
Mechanism Protection	Micro switch (Manual-reset)	Micro switch (Manual-reset)
Interlock	Shutdown by Microprocessor (Manual-reset)	Shutdown by Microprocessor (Manual-reset)
Dimensions Product excl. Packaging	762 x 700 x 780 (W x D x H, mm)	762 x 700 x 780 (W x D x H, mm)
Dimensions Product incl. Packaging	873 x 820 x 947 (W x D x H, mm)	873 x 820 x 947 (W x D x H, mm)
Weight Gross / Net	143 kg / 133 kg	143 kg / 133 kg

Operation Conditions	
Ambient Temperature	5 - 40°C
Water Supply Temperature	5 - 35°C
Water Supply Pressure	0,05-0,8MPa
Voltage Range	Rated Voltage ± 10%

Accessories
Mounting Bracket
Installation KIT