

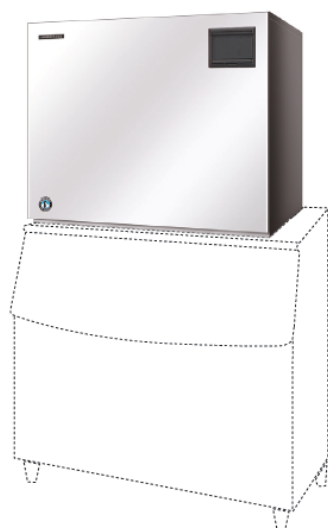
# FRISKVAND



## FM-1800ALKE FLAKE ICE MAKER / FM-1800ALKE-N NUGGET ICE MAKER

### Product Description

The FM-1800ALKE (-N) is a modular ice maker which produces either Flake or Nugget Ice. This product works in combination with an external compressor and condenser. The Flake and Nugget Ice is popular for a variety of cooling purposes including the display of fish and fresh produce as well as in the medical world for cooling blood and organs.



- Hoshizaki ice makers are micro computer controlled, controlling the ice making process to perform at its best under varying circumstances, without having to make physical adjustments.
- The characteristics of the ice produced by Hoshizaki ice makers means that 'freeze-burn' is no longer an issue when displaying fresh fish or produce.
- Quality stainless steel auger and evaporator increase the life expectancy of these components and the whole ice maker, as well as reducing costly maintenance visits.
- An easily cleanable air filter allows end users to carry out a routine cleaning schedule, extending product life expectancy and reducing the frequency and costs of maintenance call-outs.
- Due to the auger system the water consumption is equal to the ice production.

### Available Models

FM-1800ALKE (Air cooled)
FM-1800ALKE-N (Air cooled)

### Ice

Model	Shape
FM-1800ALKE	Flake
FM-1800ALKE-N	Nugget



### Bins

Model	Type of Bin	Max. Bin Capacity
B-801SA, TK 1800	Modular	348 kg

### Production

Model	Ice Production per 24h	Temperature	Water Consumption per 24h
FM-1800ALKE	Approx. 1800kg Approx. 1560kg Approx. 1335kg	AT.10°C, WT.10°C AT.21°C, WT.15°C AT.32°C, WT.21°C	Approx. 1,81m <sup>3</sup> Approx. 1,57m <sup>3</sup> Approx. 1,35m <sup>3</sup>
FM-1800ALKE-N	Approx. 1590kg Approx. 1380kg Approx. 1200kg	AT.10°C, WT.10°C AT.21°C, WT.15°C AT.32°C, WT.21°C	Approx. 1,60m <sup>3</sup> Approx. 1,39m <sup>3</sup> Approx. 1,21m <sup>3</sup>

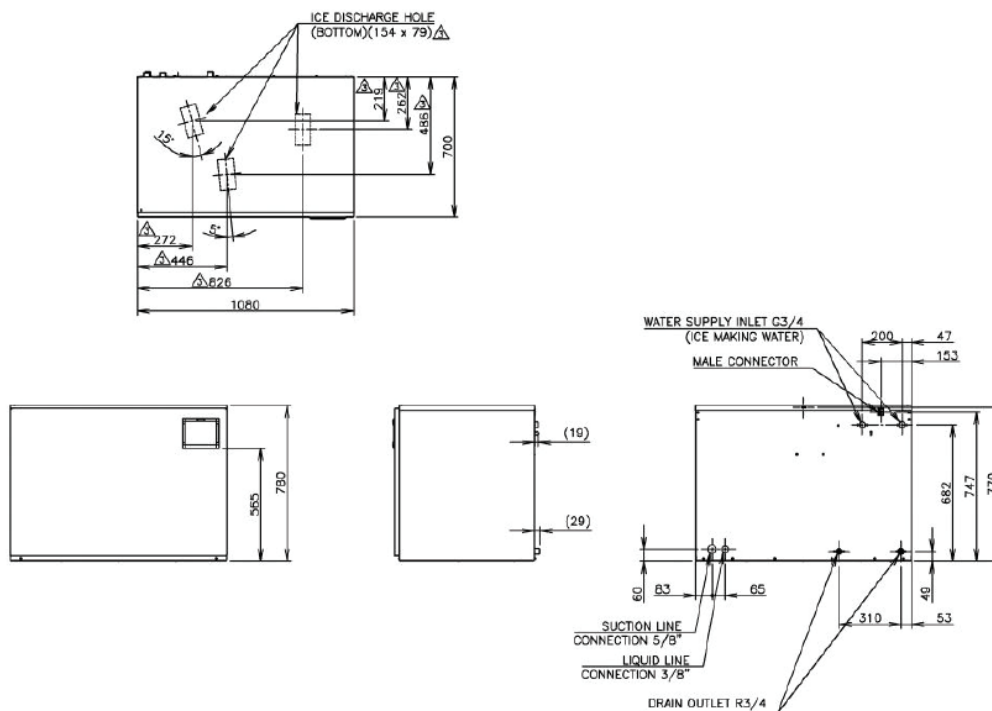
# FRISKVAND



# HOSHIZAKI

## FM-1800ALKE FLAKE ICE MAKER / FM-1800ALKE-N NUGGET ICE MAKER

FM-1800ALKE / FM-1800ALKE-N



Specification	FM-1800ALKE	FM-1800ALKE-N
<b>Power Supply</b>	1 Phase 220-240V 50Hz Capacity: 1.08kVa (4.74A)	1 Phase 220-240V 50Hz Capacity: 1.08kVa (4.74A)
<b>Amperage</b> (AT:32°C, WT:21°C)	3.7A Starting: 16.5A	3.9A Starting: 16.5A
<b>Electric Consumption</b>	710 W (Power Factor: 83%)	770W (Power Factor: 85%)
<b>Exterior</b>	Stainless Steel, Galvanized Steel (Rear)	Stainless Steel, Galvanized Steel (Rear)
<b>Connections - Water Supply</b>	Direct Connection to Water Main, inlet: G3/4 x 2 (Rear)	Direct Connection to Water Main, inlet: G3/4 x 2 (Rear)
<b>Connections - Drain</b>	Outlet: R3/4 x 2 (Rear)	Outlet: R3/4 x 2 (Rear)
<b>Ice Making System</b>	Thin ice forming inside Cylinder (Flake Ice)	Thin ice forming inside Cylinder (Nugget Ice)
<b>Evaporator</b>	Tube coiled around Cylinder (Solder Plated)	Tube coiled around Cylinder (Solder Plated)
<b>Refrigerant</b>	R404A	R404A
<b>Ice Making Water Control</b>	Float Switch and Solenoid Valve	Float Switch and Solenoid Valve
<b>Electrical Circuit Protection</b>	Circuit Breaker, Earth Wire	Circuit Breaker, Earth Wire
<b>Refrigerant Circuit Protector</b>	-	-
<b>Mechanism Protection</b>	Micro Switch (Manual-reset)	Micro Switch (Manual-reset)
<b>Interlock</b>	Shutdown by Microprocessor (Manual-reset)	Shutdown by Microprocessor (Manual-reset)
<b>Dimensions Product excl. Packaging</b>	1080 x 700 x 780 (W x D x H, mm)	1080 x 700 x 780 (W x D x H, mm)
<b>Dimensions Product incl. Packaging</b>	1191 x 820 x 947 (W x D x H, mm)	1191 x 820 x 947 (W x D x H, mm)
<b>Weight Gross / Net</b>	155kg / 140kg	155kg / 140kg

Operation Conditions	
<b>Ambient Temperature</b>	5 - 40°C
<b>Water Supply Temperature</b>	5 - 35°C
<b>Water Supply Pressure</b>	0,05-0,8MPa (0,5-8bar)
<b>Voltage Range</b>	Rated Voltage ±10%

Accessories
Mounting Bracket
Installation Kit